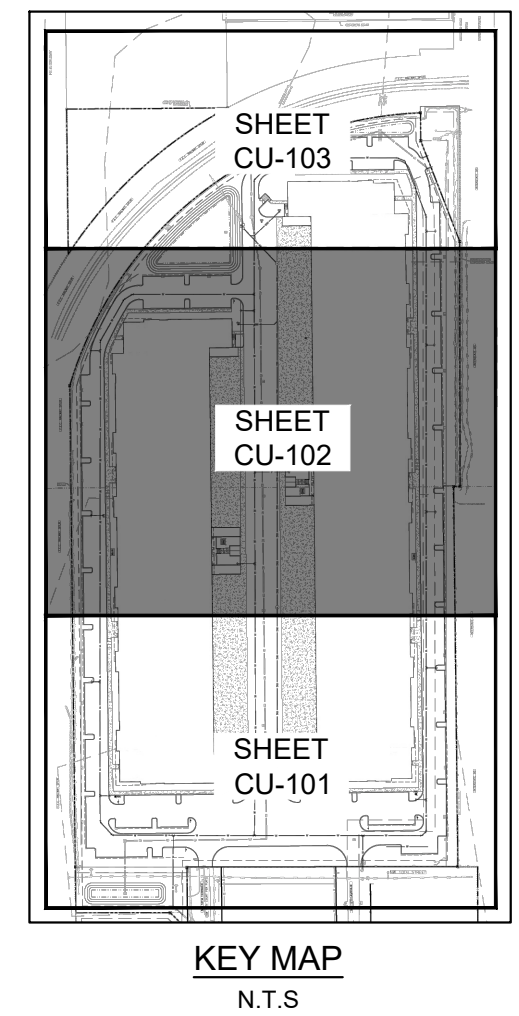
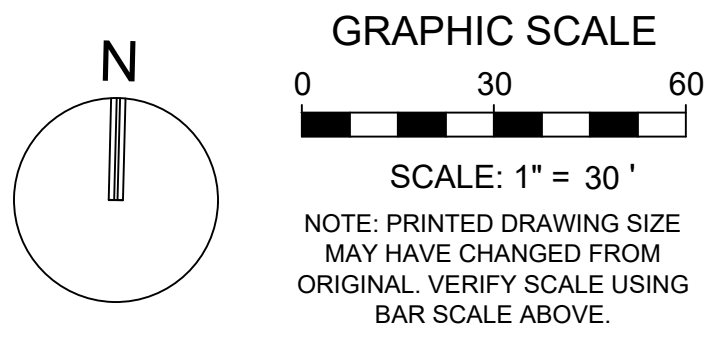
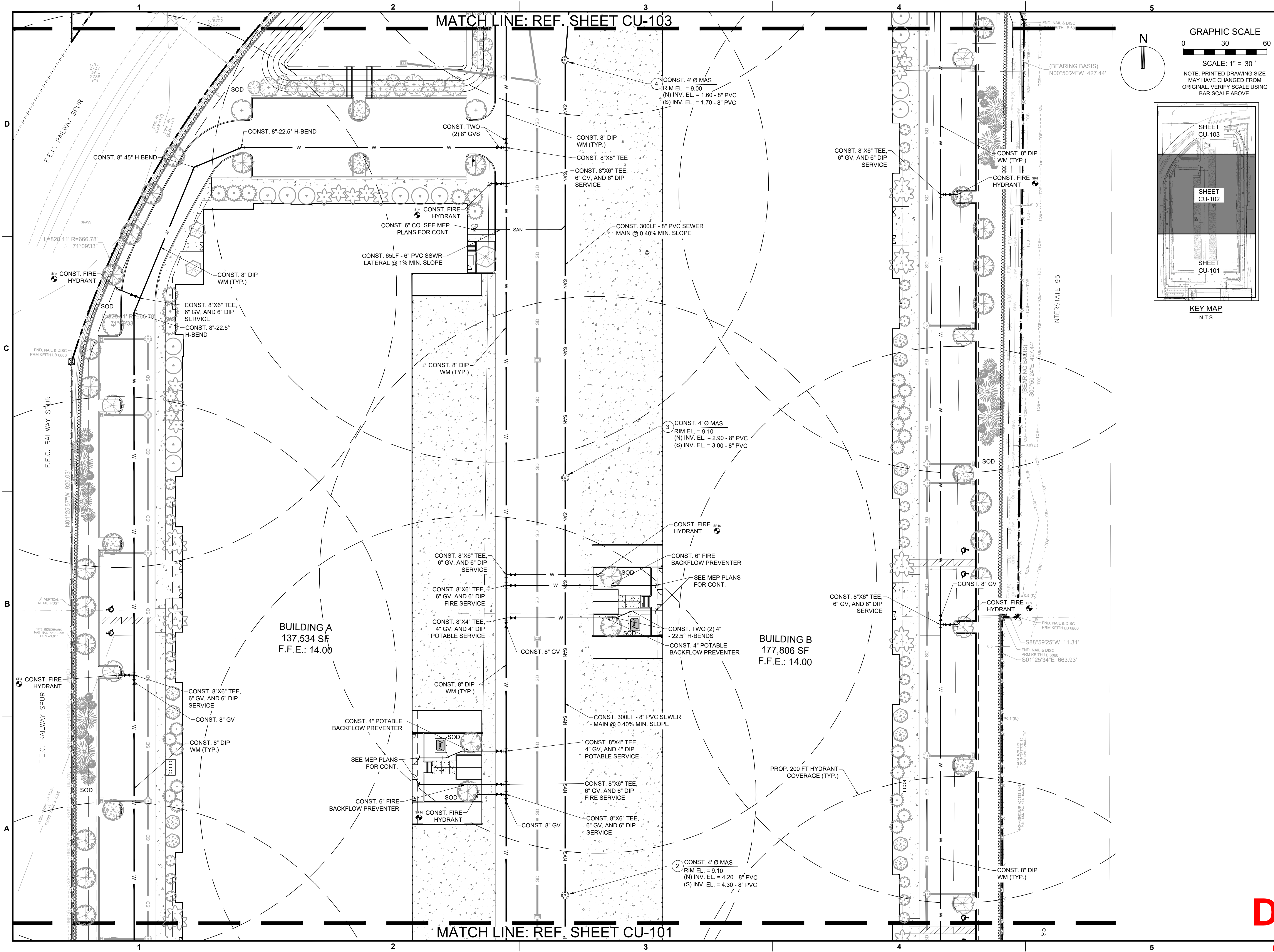


MATCH LINE: REF. SHEET CU-103

MATCH LINE: REF. SHEET CU-101



KEITH

301 East Atlantic Blvd.
Pompano Beach, FL 33060
PH: (954) 788-3400

Florida Engineering Business License: CA7928
Florida Surveyor and Mapper Business License: LB6680
Florida Landscape Architecture Business License: LC26000457

REVISIONS		
NO.	DESCRIPTION	DATE

RESPONSIBILITY FOR THE USE OF THESE PLANS PRIOR TO OBTAINING PERMITS FROM ALL AGENCIES HAVING JURISDICTION OVER THE PROJECT WILL FALL SOLELY UPON THE USER.

ISSUE DATE:	08/27/2025
DESIGNED BY:	BB
DRAWN BY:	JS
CHECKED BY:	NW
BID-CONTRACT:	

THOMAS REVIDIAN, P.E.
FLORIDA REG. NO. 60523
(FOR THE FIRM)

CLIENT

FIRST INDUSTRIAL

PROJECT

FIRST 95 DISTRIBUTION CENTER- PHASE II
1000-1041 NW 12th Ter.
Pompano Beach, FL

SHEET TITLE

WATER AND SEWER PLAN

DR SHEET **CU-102**

PROJECT NUMBER **10607.14**

PZ25-12000030

10/01/2025

Plotted by: douana On 8/27/2025 11:11 AM

Drawing name: Q:\10607.14 - First 95 Distribution Center - PH 2 - First Industrial\Engineering\Cadd\10607.14-CU-1XX.dwg

STATUS: PRELIMINARY